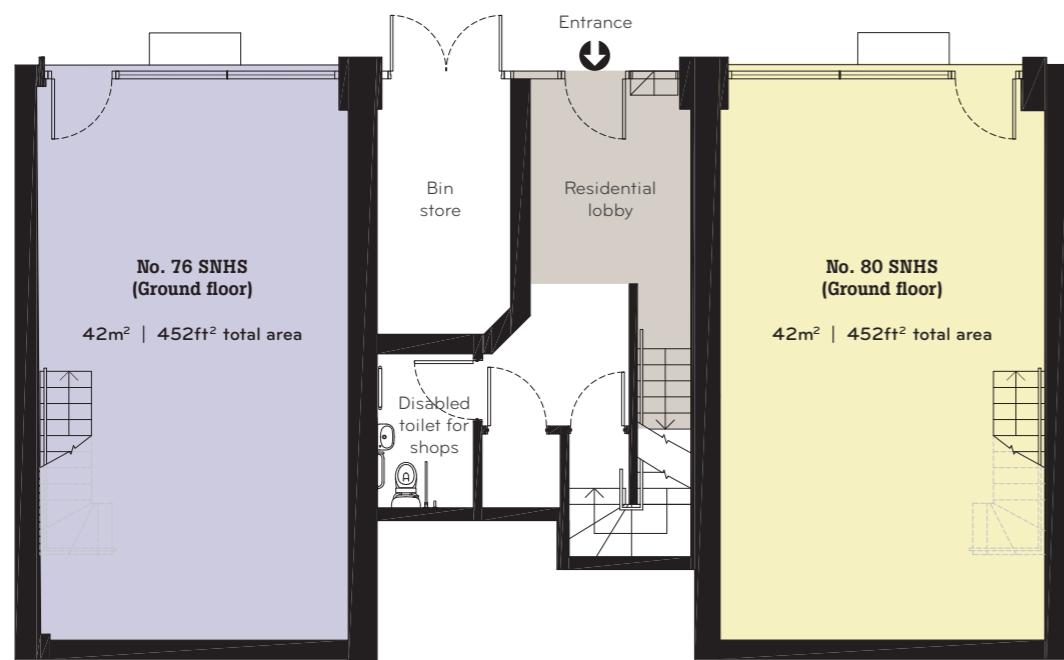
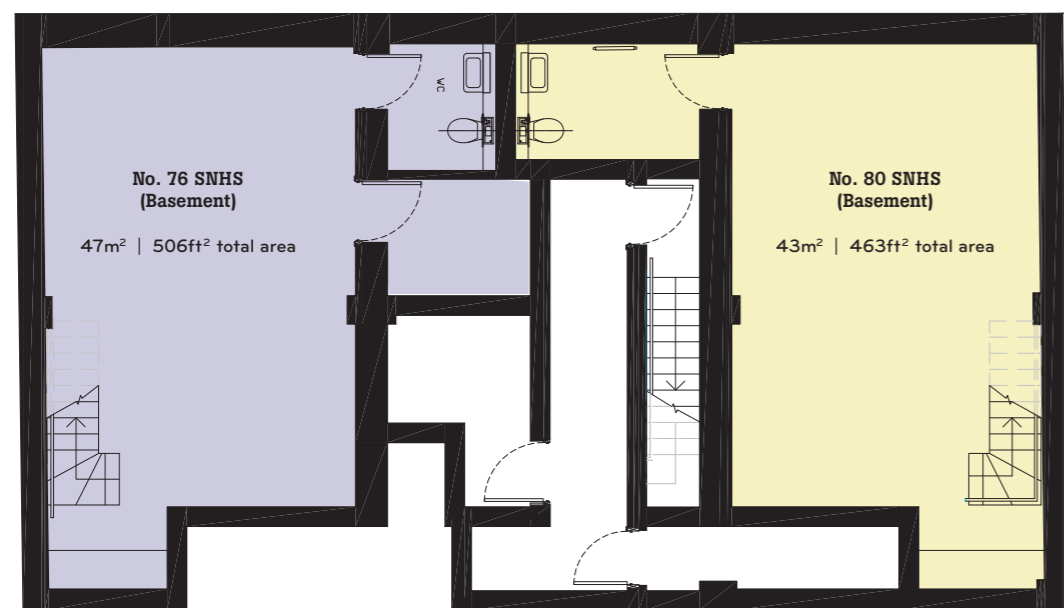


G



B



No. 76 SNHS, Total area
89m² | 958ft² total area

No. 80 SNHS, Total area
83m² | 893ft² total area

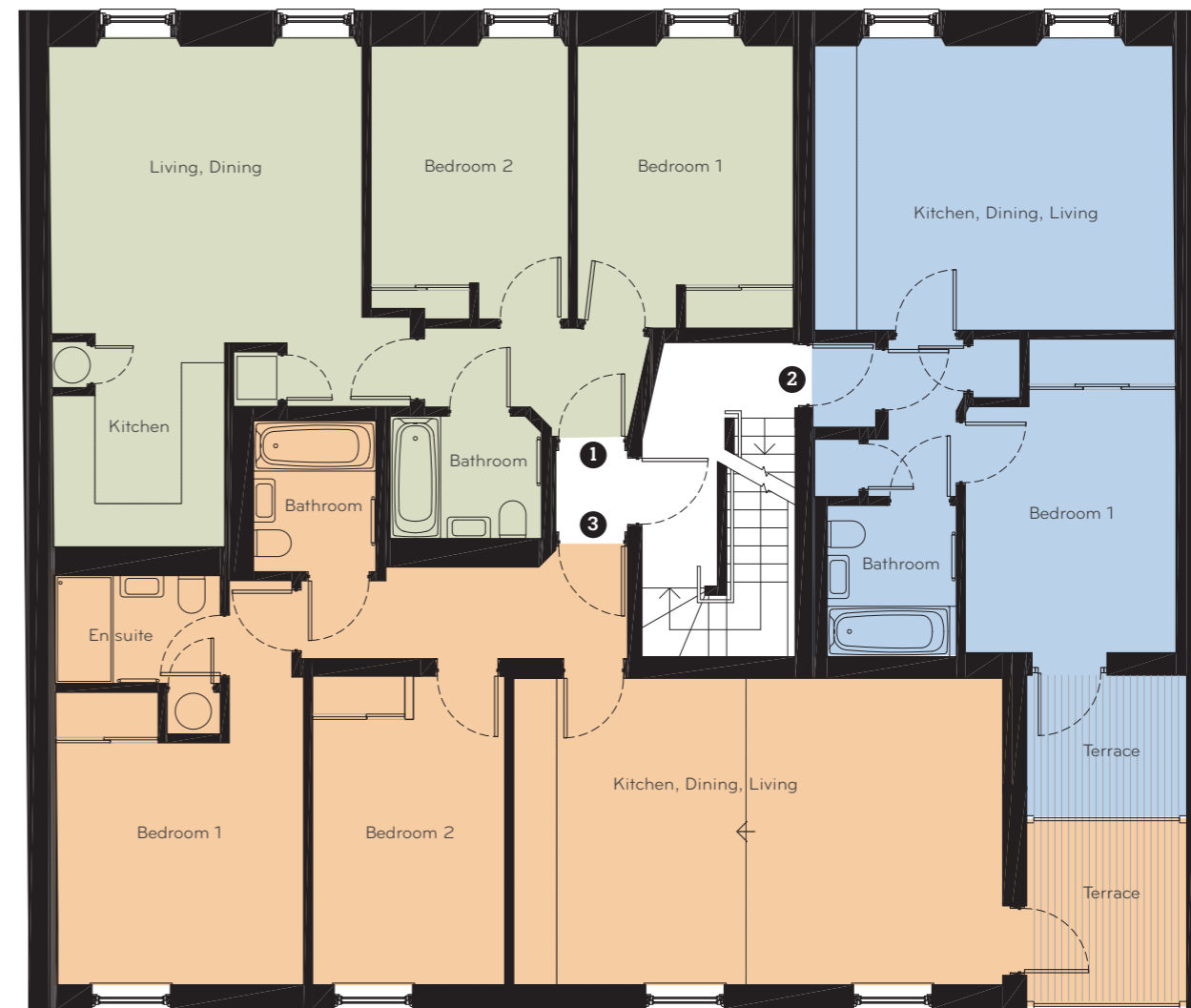
All measurements are gross internal areas. Terraces are not included in the calculation. Floorplans are correct at time of going to print. They may be subject to minor alterations. Please refer to 78snhs-n16.com for the most up-to-date drawings.

IDM Properties LLP
Office B, West Gainsborough,
1 Poole Street, London N1 5EA

T 020 7739 1650
F 020 7739 0731
E mail@idmproperties.com
idmproperties.com



1



Apartment 1, First floor
59m² | 635ft² total area

LIVING / DINING / KITCHEN
4.1m x 4.3m (26m² | 280ft²)

BEDROOM 1
3.9m x 3m (12m² | 132ft²)

BEDROOM 2
3.3m x 2.7m (9m² | 96ft²)

Apartment 2, First floor
42m² | 452ft² total area

LIVING / DINING / KITCHEN
3.9m x 5m (20m² | 215ft²)

BEDROOM 1
3.6m x 2.9m (12.8m² | 138ft²)

TERRACE
2.2m x 2m (4.4m² | 47ft²)

Apartment 3, First floor
71.5m² | 769ft² total area

LIVING / DINING / KITCHEN
4.3m x 6.6m (28m² | 301ft²)

BEDROOM 1
4.3m x 2.9m (14m² | 150ft²)

BEDROOM 2
3.3m x 3.4m (12m² | 129ft²)

TERRACE
2.2m x 2m (4.4m² | 47ft²)



All measurements are gross internal areas. Terraces are not included in the calculation. Floorplans are correct at time of going to print. They may be subject to minor alterations. Please refer to 78snhs-n16.com for the most up-to-date drawings.

IDM Properties LLP
Office B, West Gainsborough,
1 Poole Street, London N1 5EA

T 020 7739 1650
F 020 7739 0731
E mail@idmproperties.com
idmproperties.com



2



Apartment 4, Second floor
59m² | 635ft² total area

LIVING / DINING / KITCHEN
4.1m x 4.3m (26m² | 280ft²)

BEDROOM 1
3.9m x 3m (12m² | 132ft²)

BEDROOM 2
3.3m x 2.7m (9m² | 96ft²)

Apartment 5, Second floor
55m² | 592ft² total area

LIVING / DINING / KITCHEN
3.9m x 5m (20m² | 215ft²)

BEDROOM 1 (MEZZANINE)
4.3m x 2.7m (12m² | 128ft²)

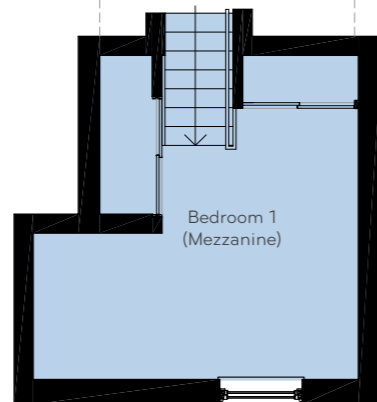
BEDROOM 2
3.6m x 2.6m (9m² | 97ft²)

Apartment 6, Second floor
72m² | 769ft² total area

LIVING / DINING / KITCHEN
4.3m x 6.6m (32m² | 348ft²)

BEDROOM 1
4.3m x 2.9m (14m² | 150ft²)

BEDROOM 2
3.3m x 3.4m (12m² | 129ft²)



All measurements are gross internal areas. Terraces are not included in the calculation. Floorplans are correct at time of going to print. They may be subject to minor alterations. Please refer to 78snhs-n16.com for the most up-to-date drawings.

IDM Properties LLP
Office B, West Gainsborough,
1 Poole Street, London N1 5EA

T 020 7739 1650
F 020 7739 0731
E mail@idmproperties.com
idmproperties.com

3



Apartment 7, Third floor
62m² | 667ft² total area

LIVING / DINING / KITCHEN
4.9m x 4.2m (23m² | 247ft²)

BEDROOM 1
3.3m x 3.6m (14m² | 148ft²)

BEDROOM 2
3.4m x 3.1m (13m² | 141ft²)

TERRACE
7.7m x 3m (23m² | 249ft²)

Apartment 8, Third floor
60m² | 646ft² total area

LIVING / DINING / KITCHEN
6.3m x 3.6m (25m² | 269ft²)

BEDROOM 1
3.3m x 3m (12m² | 129ft²)

BEDROOM 2
3.9m x 3m (12m² | 129ft²)

TERRACE
3m x 2.7m (8m² | 87ft²)



All measurements are gross internal areas. Terraces are not included in the calculation. Floorplans are correct at time of going to print. They may be subject to minor alterations. Please refer to 78snhs-n16.com for the most up-to-date drawings.

IDM Properties LLP
Office B, West Gainsborough,
1 Poole Street, London N1 5EA

T 020 7739 1650
F 020 7739 0731
E mail@idmproperties.com
idmproperties.com

