

OFFICE 1
Total Area (112.4m², 1210ft²)

OFFICE 2
Total Area (161.7m², 1740ft²)

FLOOR
5th
4th
3rd
2nd
1st
GROUND
BASEMENT

All measurements are gross internal areas. Room sizes may be subject to minor alterations. Please refer to channelseahouse-E15.com for the most up-to-date floor plans.

Head Office: IDM Properties LLP,
Office B, West Gainsborough,
1 Poole Street, London N1 5EA

+44 (0)20 7739 1650
mail@idmproperties.com
idmproperties.com



STUDIO 4 Total Area (46.4m ² , 499ft ²)
FLOOR GROUND
Living, Dining, Kitchen 3.4m x 6.8m (28.6m ² , 307.5ft ²)
Bedroom Area 2.7m x 4.2m (13.0m ² , 140.3ft ²)

APARTMENT 5 Total Area (58.1m ² , 625ft ²)
FLOOR GROUND
Living, Dining, Kitchen 3.4m x 7.1m (22.8m ² , 245.9ft ²)
Bedroom 1 2.7m x 4.8m (13.1m ² , 140.7ft ²)
Bedroom 2 2.0m x 3.6m (6.8m ² , 73.4ft ²)

APARTMENT 6 Total Area (68.5m ² , 737ft ²)
FLOOR GROUND
Living, Dining, Kitchen 3.8m x 7.1m (26.4m ² , 284.1ft ²)
Bedroom 1 2.6m x 5.2m (13.9m ² , 149.5ft ²)
Bedroom 2 3.0m x 3.5m (12.0m ² , 128.7ft ²)

APARTMENT 7 Total Area (61.0m ² , 657ft ²)
FLOOR GROUND
Living, Dining, Kitchen 3.9m x 5.9m (22.7m ² , 244.4ft ²)
Bedroom 1 2.5m x 4.8m (11.6m ² , 125.0ft ²)
Bedroom 2 2.9m x 2.9m (9.9m ² , 106.3ft ²)

APARTMENT 8 Total Area (58.0m ² , 624ft ²)
FLOOR GROUND
Living, Dining, Kitchen 3.2m x 7.1m (22.4m ² , 241.6ft ²)
Bedroom 1 2.7m x 4.8m (13.1m ² , 140.7ft ²)
Bedroom 2 2.2m x 3.6m (7.5m ² , 80.2ft ²)

APARTMENT 9 Total Area (46.7m ² , 503ft ²)
FLOOR GROUND
Living, Dining, Kitchen 3.4m x 5.2m (21.4m ² , 230.3ft ²)
Bedroom 2.7m x 4.6m (14.9m ² , 160.8ft ²)

FLOOR
5th
4th
3rd
2nd
1st
GROUND
BASEMENT



APARTMENT 3 Total Area (65.9m ² , 709ft ²)
FLOOR GROUND
Living, Dining, Kitchen 3.8m x 6.3m (23.5m ² , 253.2ft ²)
Bedroom 1 3.3m x 3.9m (14.2m ² , 153.2ft ²)
Bedroom 2 3.2m x 3.4m (12.4m ² , 133.7ft ²)

APARTMENT 2 Total Area (42.3m ² , 455ft ²)
FLOOR GROUND
Living, Dining, Kitchen 3.8m x 6.3m (22.3m ² , 240.2ft ²)
Bedroom 2.9m x 3.5m (11.0m ² , 118.6ft ²)

APARTMENT 1 Total Area (39.7m ² , 427ft ²)
FLOOR GROUND
Living, Dining, Kitchen 4.1m x 4.1m (16.5m ² , 177.3ft ²)
Bedroom 3.4m x 3.4m (13.4m ² , 143.8ft ²)

STUDIO 12 Total Area (30.4m ² , 327ft ²)
FLOOR GROUND
Living, Dining, Kitchen 2.8m x 4.3m (11.7m ² , 125.9ft ²)
Bedroom Area 2.3m x 3.7m (10.1m ² , 108.9ft ²)

APARTMENT 11 Total Area (44.1m ² , 475ft ²)
FLOOR GROUND
Living, Dining, Kitchen 4.4m x 6.3m (21.9m ² , 235.5ft ²)
Bedroom 2.6m x 3.9m (11.3m ² , 121.9ft ²)

APARTMENT 10 Total Area (53.3m ² , 574ft ²)
FLOOR GROUND
Living, Dining, Kitchen 4.8m x 5.2m (23.1m ² , 248.9ft ²)
Bedroom 3.5m x 4.0m (16.5m ² , 177.9ft ²)

All measurements are gross internal areas. Room sizes may be subject to minor alterations. Please refer to channelseahouse-E15.com for the most up-to-date floor plans.

Head Office: IDM Properties LLP, Office B, West Gainsborough, 1 Poole Street, London N1 5EA

+44 (0)20 7739 1650
mail@idmproperties.com
idmproperties.com



APARTMENT 16 Total Area (42.6m ² , 459ft ²)
FLOOR 1 st
Living, Dining, Kitchen 4.2m x 4.8m (18.0m ² , 193.7ft ²)
Bedroom 2.7m x 3.4m (11.5m ² , 123.5ft ²)
Balcony Area (21.2m ² , 228ft ²)

APARTMENT 17 Total Area (38.6m ² , 415ft ²)
FLOOR 1 st
Living, Dining, Kitchen 4.1m x 4.8m (17.8m ² , 191.1ft ²)
Bedroom 4.2m x 2.6m (10.6m ² , 114.5ft ²)
Balcony Area (25.0m ² , 269ft ²)

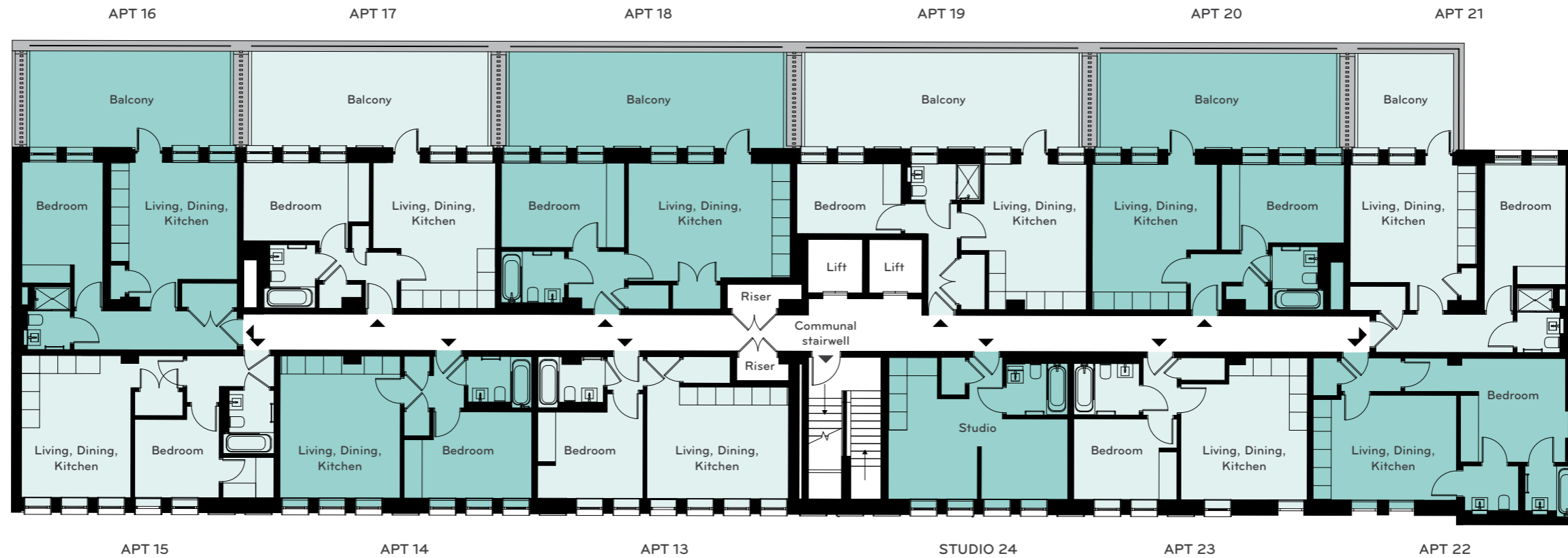
APARTMENT 18 Total Area (43.7m ² , 470ft ²)
FLOOR 1 st
Living, Dining, Kitchen 5.4m x 3.8m (22.3m ² , 239.5ft ²)
Bedroom 4.1m x 2.8m (11.4m ² , 123.1ft ²)
Balcony Area (29.0m ² , 312ft ²)

APARTMENT 19 Total Area (35.0m ² , 377ft ²)
FLOOR 1 st
Living, Dining, Kitchen 3.4m x 4.8m (17.1m ² , 184.0ft ²)
Bedroom 2.9m x 2.3m (7.8m ² , 84.2ft ²)
Balcony Area (29.0m ² , 312ft ²)

APARTMENT 20 Total Area (38.6m ² , 415ft ²)
FLOOR 1 st
Living, Dining, Kitchen 4.1m x 4.8m (18.0m ² , 193.7ft ²)
Bedroom 3.5m x 2.6m (11.0m ² , 118.7ft ²)
Balcony Area (26.3m ² , 283ft ²)

APARTMENT 21 Total Area (41.4m ² , 446ft ²)
FLOOR 1 st
Living, Dining, Kitchen 4.2m x 4.8m (18.6m ² , 200.6ft ²)
Bedroom 2.7m x 3.4m (11.5m ² , 123.8ft ²)
Balcony Area (10.6m ² , 114ft ²)

FLOOR
5th
4th
3rd
2nd
1st
GROUND
BASEMENT



APARTMENT 15 Total Area (39.0m ² , 420ft ²)
FLOOR 1 st
Living, Dining, Kitchen 3.6m x 4.7m (20.2m ² , 217.7ft ²)
Bedroom 2.8m x 2.6m (10.1m ² , 108.8ft ²)

APARTMENT 14 Total Area (39.1m ² , 421ft ²)
FLOOR 1 st
Living, Dining, Kitchen 4.0m x 4.7m (18.6m ² , 200.6ft ²)
Bedroom 3.6m x 2.9m (11.3m ² , 121.4ft ²)

APARTMENT 13 Total Area (36.8m ² , 396ft ²)
FLOOR 1 st
Living, Dining, Kitchen 4.7m x 3.7m (19.9m ² , 214.5ft ²)
Bedroom 2.9m x 2.9m (10.7m ² , 115.3ft ²)

STUDIO 24 Total Area (27.9m ² , 300ft ²)
FLOOR 1 st
Living, Dining, Kitchen 3.0m x 4.7m (15.2m ² , 163.7ft ²)
Bedroom Area 2.9m x 2.7m (7.7m ² , 82.6ft ²)

APARTMENT 23 Total Area (36.3m ² , 391ft ²)
FLOOR 1 st
Living, Dining, Kitchen 4.2m x 4.7m (18.2m ² , 196.3ft ²)
Bedroom 2.8m x 2.7m (9.1m ² , 98.1ft ²)

APARTMENT 22 Total Area (41.4m ² , 446ft ²)
FLOOR 1 st
Living, Dining, Kitchen 4.8m x 3.5m (16.4m ² , 176.7ft ²)
Bedroom 2.9m x 3.4m (13.9m ² , 150.1ft ²)

All measurements are gross internal areas. Room sizes may be subject to minor alterations. Please refer to channelseahouse-E15.com for the most up-to-date floor plans. The outside space is not included in the calculation.

Head Office: IDM Properties LLP, Office B, West Gainsborough, 1 Poole Street, London N1 5EA

+44 (0)20 7739 1650
mail@idmproperties.com
idmproperties.com



APARTMENT	28 40 52 64
FLOOR	2 nd 3 rd 4 th 5 th
Total Area	(42.6m ² , 459ft ²)
Living, Dining, Kitchen	4.2m x 3.9m (18.0m ² , 193.6ft ²)
Bedroom	2.7m x 3.4m (11.5m ² , 123.4ft ²)

APARTMENT	29 41 53 65
FLOOR	2 nd 3 rd 4 th 5 th
Total Area	(38.6m ² , 415ft ²)
Living, Dining, Kitchen	4.1m x 4.8m (17.8m ² , 191.1ft ²)
Bedroom	3.5m x 2.6m (10.6m ² , 114.5ft ²)

APARTMENT	30 42 54 66
FLOOR	2 nd 3 rd 4 th 5 th
Total Area	(43.7m ² , 470ft ²)
Living, Dining, Kitchen	5.4m x 3.8m (22.2m ² , 239.5ft ²)
Bedroom	3.5m x 2.8m (11.4m ² , 123.1ft ²)

APARTMENT	31 43 55 67
FLOOR	2 nd 3 rd 4 th 5 th
Total Area	(35.0m ² , 377ft ²)
Living, Dining, Kitchen	3.4m x 4.8m (17.1m ² , 183.8ft ²)
Bedroom	2.9m x 2.3m (7.8m ² , 84.2ft ²)

APARTMENT	32 44 56 68
FLOOR	2 nd 3 rd 4 th 5 th
Total Area	(38.6m ² , 415ft ²)
Living, Dining, Kitchen	4.1m x 4.8m (18.0m ² , 193.6ft ²)
Bedroom	4.1m x 2.6m (11.0m ² , 118.5ft ²)

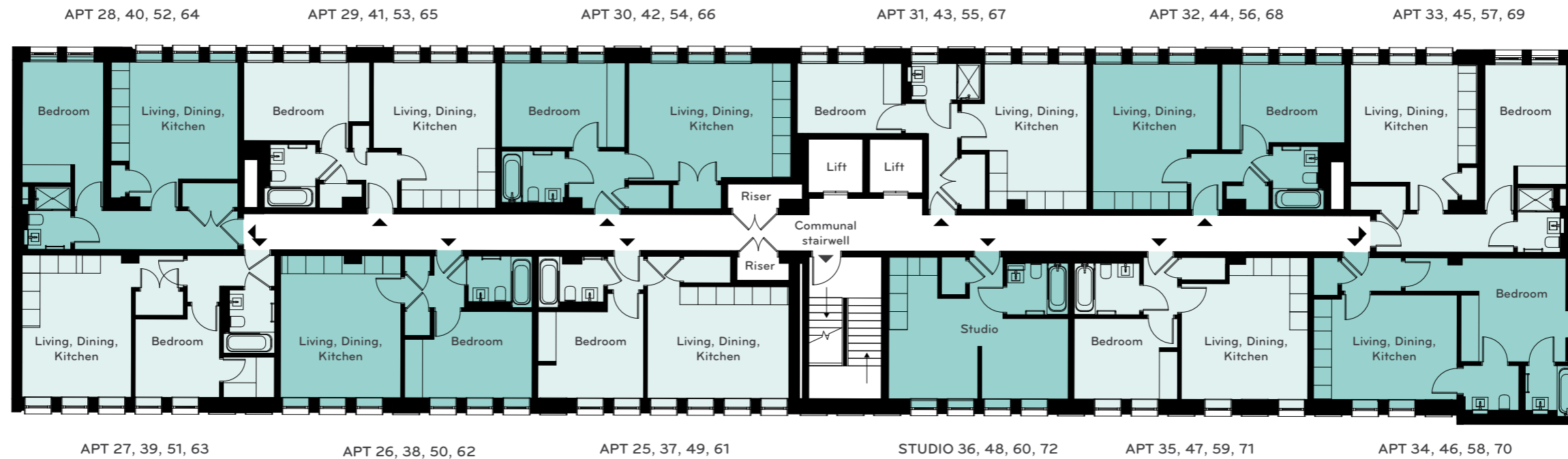
APARTMENT	33 45 57 69
FLOOR	2 nd 3 rd 4 th 5 th
Total Area	(41.4m ² , 446ft ²)
Living, Dining, Kitchen	4.2m x 4.8m (18.0m ² , 194.1ft ²)
Bedroom	2.7m x 3.4m (11.5m ² , 123.3ft ²)

FLOOR	5 th
	4 th
	3 rd
	2 nd
	1 st
	GROUND
	BASEMENT

All measurements are gross internal areas. Room sizes may be subject to minor alterations. Please refer to channelseahouse-E15.com for the most up-to-date floor plans.

Head Office: IDM Properties LLP, Office B, West Gainsborough, 1 Poole Street, London N1 5EA

+44 (0)20 7739 1650
mail@idmproperties.com
idmproperties.com



APARTMENT	27 39 51 63
FLOOR	2 nd 3 rd 4 th 5 th
Total Area	(39.0m ² , 420ft ²)
Living, Dining, Kitchen	3.6m x 4.7m (20.2m ² , 217.9ft ²)
Bedroom	2.8m x 2.6m (10.2m ² , 109.3ft ²)

APARTMENT	26 38 50 62
FLOOR	2 nd 3 rd 4 th 5 th
Total Area	(39.1m ² , 421ft ²)
Living, Dining, Kitchen	4.0m x 4.7m (18.6m ² , 200.6ft ²)
Bedroom	3.6m x 2.9m (11.2m ² , 120.9ft ²)

APARTMENT	25 37 49 61
FLOOR	2 nd 3 rd 4 th 5 th
Total Area	(36.8m ² , 396ft ²)
Living, Dining, Kitchen	4.7m x 3.7m (19.9m ² , 214.3ft ²)
Bedroom	2.9m x 2.9m (10.7m ² , 115.5ft ²)

STUDIO	36 48 60 72
FLOOR	2 nd 3 rd 4 th 5 th
Total Area	(27.8m ² , 299ft ²)
Living, Dining, Kitchen	3.0m x 4.7m (15.2m ² , 163.6ft ²)
Bedroom Area	2.9m x 2.7m (7.6m ² , 82.3ft ²)

APARTMENT	35 47 59 71
FLOOR	2 nd 3 rd 4 th 5 th
Total Area	(36.3m ² , 391ft ²)
Living, Dining, Kitchen	4.2m x 4.7m (18.2m ² , 196.3ft ²)
Bedroom	2.8m x 2.7m (9.1m ² , 98.0ft ²)

APARTMENT	34 46 58 70
FLOOR	2 nd 3 rd 4 th 5 th
Total Area	(41.4m ² , 446ft ²)
Living, Dining, Kitchen	4.8m x 3.5m (16.4m ² , 177.0ft ²)
Bedroom	2.9m x 3.4m (14.0m ² , 150.2ft ²)